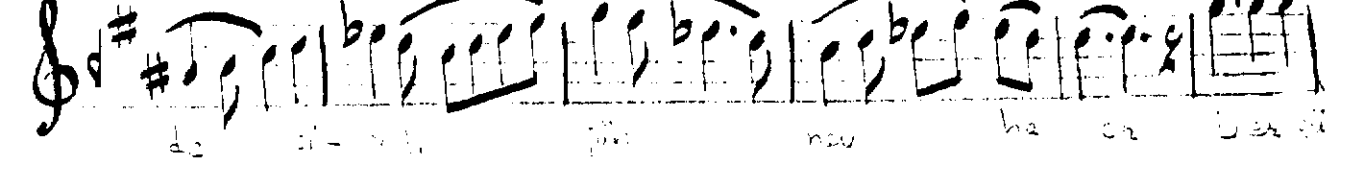
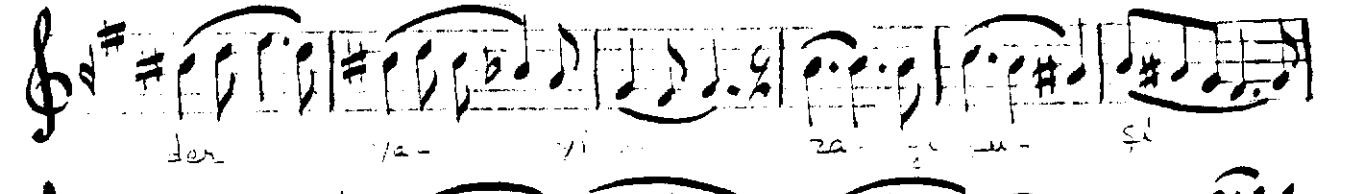
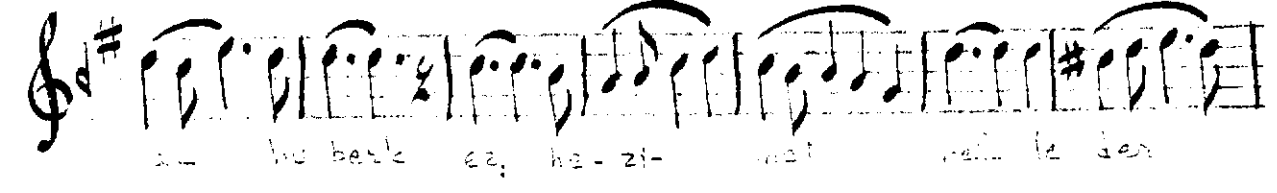
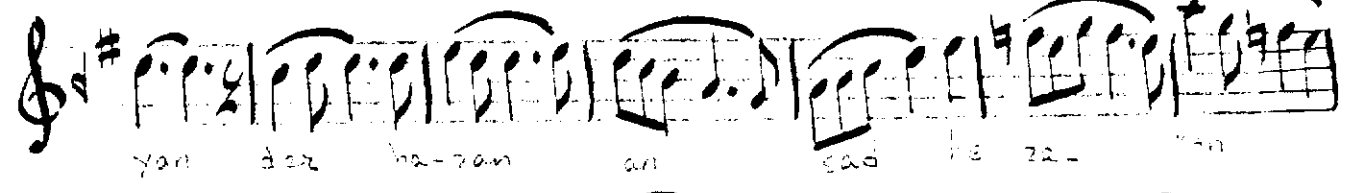
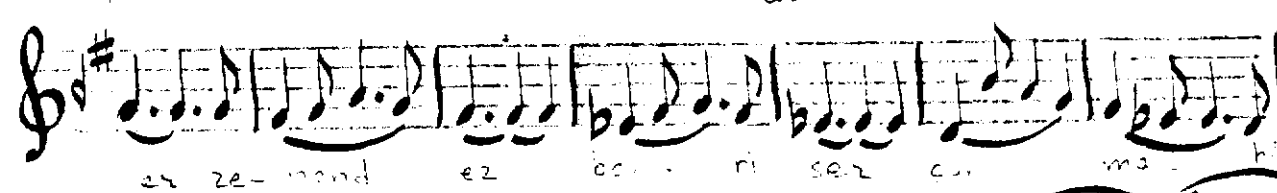
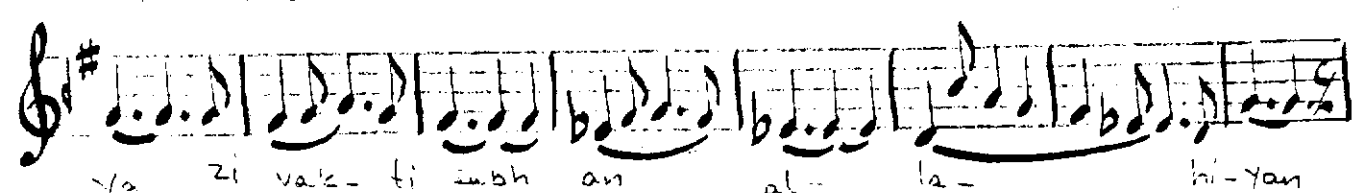
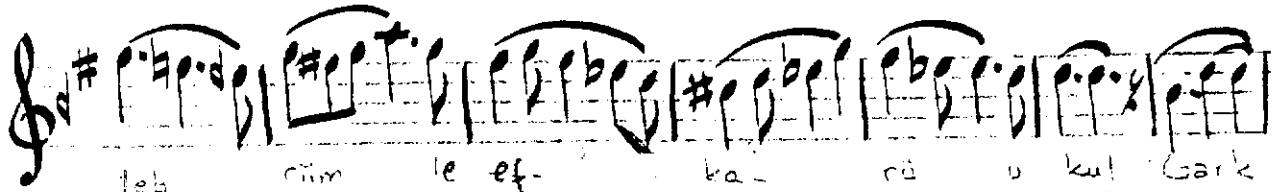
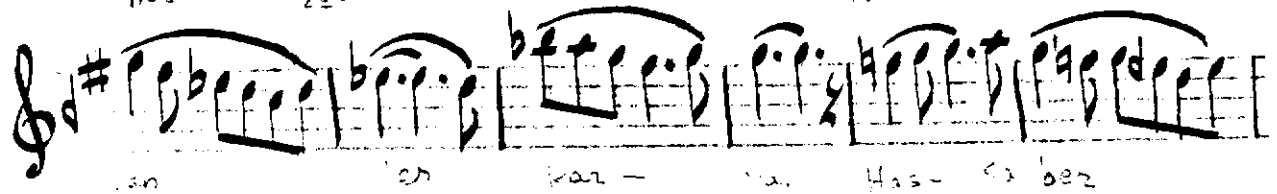
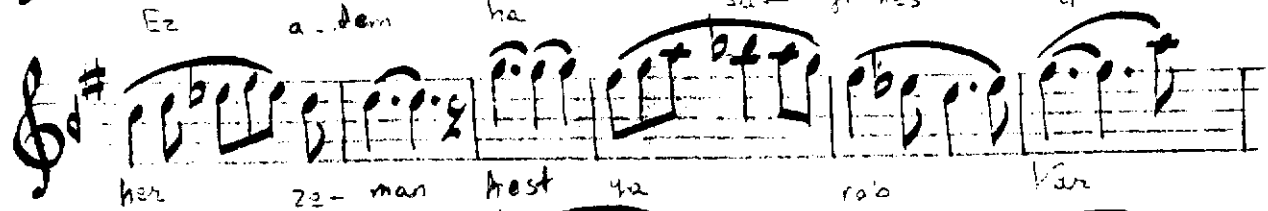
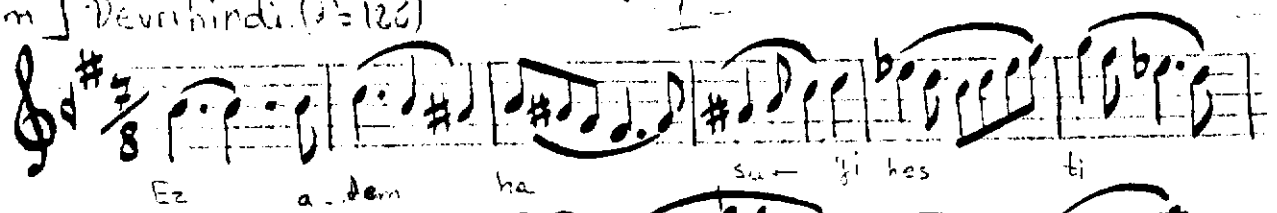


Birinci
Salam

Huzzam Hymn 224
Devrihindi (D=126)



lis tan nev- ha ker- de pür ha-

dar Baz fer man a- ye-dez

sa- la- ri diñ mer, a-dem rā an- çî

hur- di bāz diñ An- çî hur-

di vā diñ ey mer- zi si-

Yah Ez ne- ba- tū da rü ez

ber. kü çî yah Ey bi- ra- der ak- li

Yek dem ba. hud ân Dam be dem der

tū ha- za nes- tū be har Ba- çî

dil ra seb- zî ter vü ta ze

bin pür zi gon- ca ver- dü ser-

Handwritten musical notation for the first line of the song. The melody is written on a single staff with a treble clef and a key signature of one flat (B-flat). The lyrics are written below the staff.

vü ya - se - min Zan bi xi i ber ki

Handwritten musical notation for the second line of the song. The melody continues on a single staff with a treble clef and a key signature of one flat. The lyrics are written below the staff.

pen - ha keş - te şakh Zan bi -

Handwritten musical notation for the third line of the song. The melody continues on a single staff with a treble clef and a key signature of one flat. The lyrics are written below the staff.

ki - i pöl - ni han sah - ra vü kâkh

2. Selâm Frenkân (♩ = 132)

Handwritten musical notation for the fourth line of the song. The melody continues on a single staff with a treble clef and a key signature of one flat. The lyrics are written below the staff.

Gö - züm ki ka - na b o yan dı şa - ra - bı ney le - yim Ci - şer ki od - lara yan dı

Handwritten musical notation for the fifth line of the song. The melody continues on a single staff with a treble clef and a key signature of one flat. The lyrics are written below the staff.

ke - ba - bı ney - le - yim ke - ba - bı ney - le - yim Ne ya - re ya - radı cümmin

Handwritten musical notation for the sixth line of the song. The melody continues on a single staff with a treble clef and a key signature of one flat. The lyrics are written below the staff.

ne ba - na bil - mem hiç İ - la - hi ben bu bir - a vuc tû - ra - bı ney - le - yim

Handwritten musical notation for the seventh line of the song. The melody continues on a single staff with a treble clef and a key signature of one flat. The lyrics are written below the staff.

tû - ra - bı ney - le - yim

Handwritten musical notation for the eighth line of the song. The melody continues on a single staff with a treble clef and a key signature of one flat. The lyrics are written below the staff.

3. Selâm Devri kebir (♩ = 120)

Handwritten musical notation for the ninth line of the song. The melody continues on a single staff with a treble clef and a key signature of one flat. The lyrics are written below the staff.

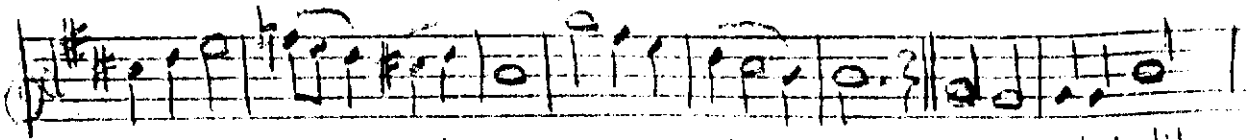
Ez beh - ri Hu - da aş - ki di - ğer yar me - da - rid

Handwritten musical notation for the tenth line of the song. The melody continues on a single staff with a treble clef and a key signature of one flat. The lyrics are written below the staff.

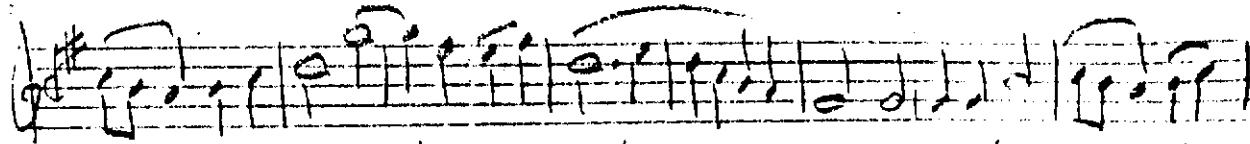
Der mec - li - si can fik - ri di - ğer kân me - da - rid

Handwritten musical notation for the eleventh line of the song. The melody continues on a single staff with a treble clef and a key signature of one flat. The lyrics are written below the staff.

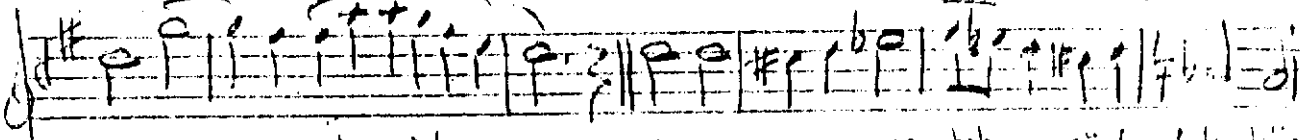
Der mec - li - si can filer cû - na - nest ki gûft tar pin - han



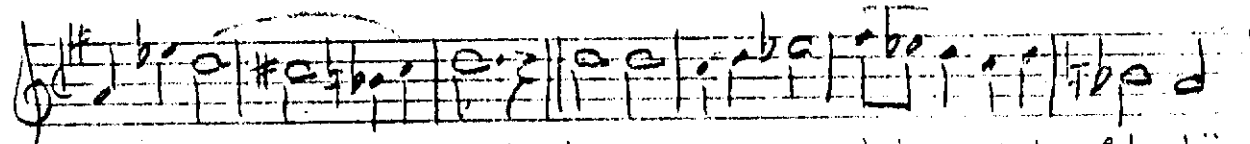
gü ne-mi ma- ned iz- mar me- da- rid An ha-ri-si dil



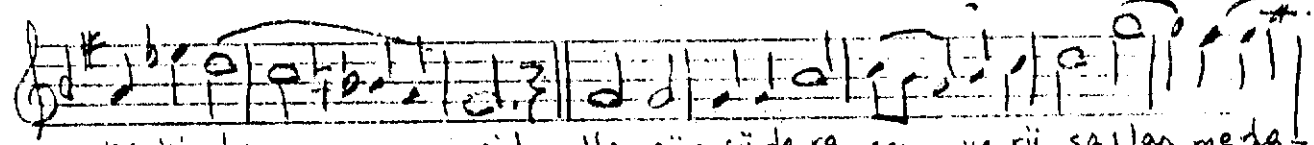
müş- ri-fi can saht ga-yu- vest Ba gay-re-ti o sü- yi



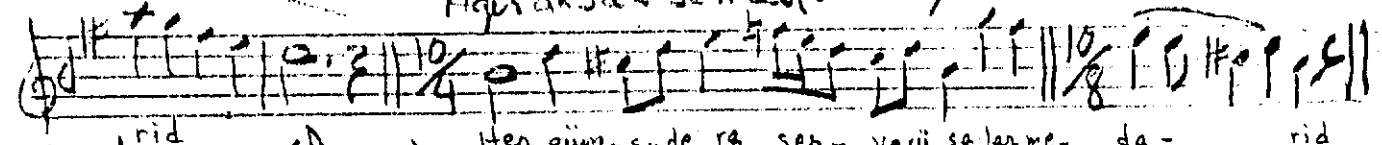
ağ- yar me- da- rid Her ves-ve- se ra bah- sü te- fek- kün



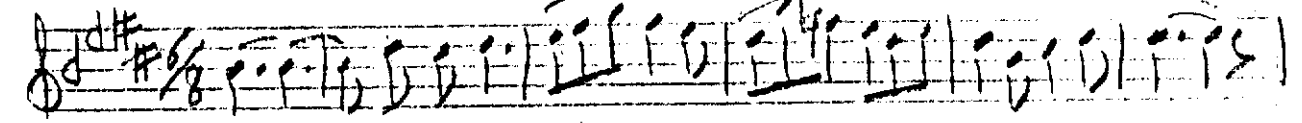
ne- bi ha- nid Her ves-ve- se ra bah- sü te- fek- kün



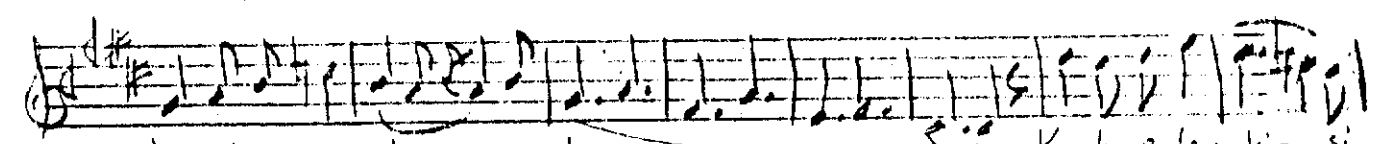
ne bi- ha- nid Her güm- şü de ra ser- ve- rü sa- lan me- da- rid
Ağırakak Sema (♩-120) Akşak Sema (♩-152)



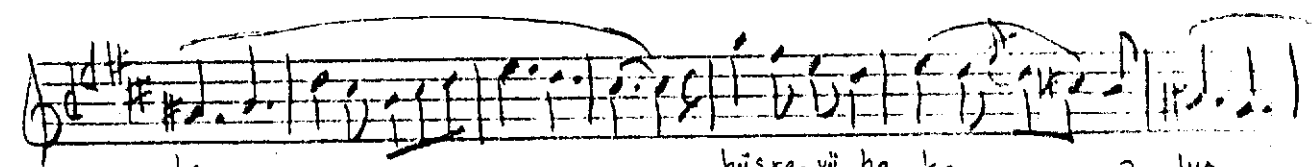
3. Yürük Sema (♩-120) rid Her güm- şü de ra ser- ve- rü sa- lan me- da- rid
Müstear



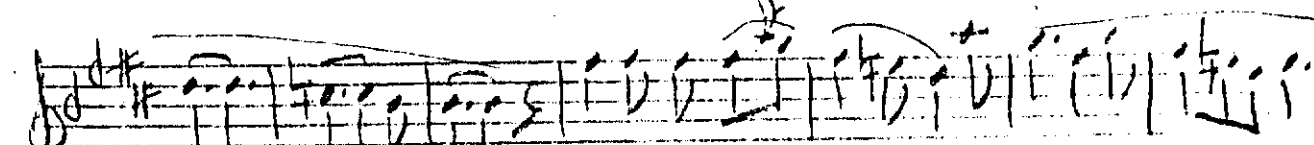
Ey ki he- zar a- fe- rin



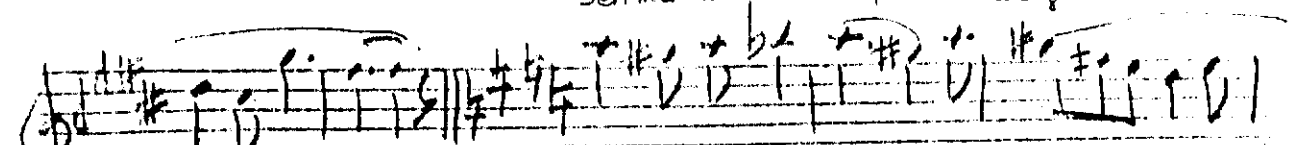
bu ni- ce sul- tan o- lur Ku- lu o- lan ki- si-



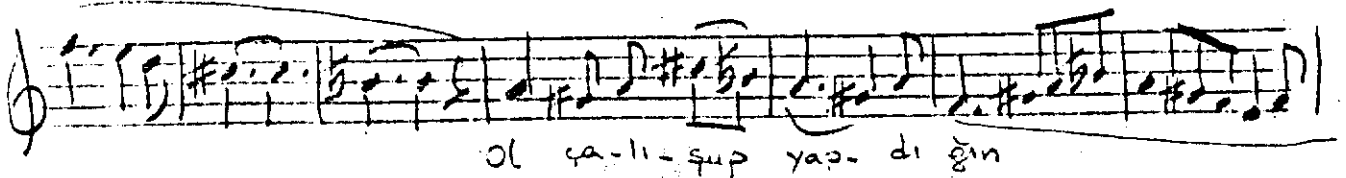
ler hü- gre- vü ha- kan o- lur



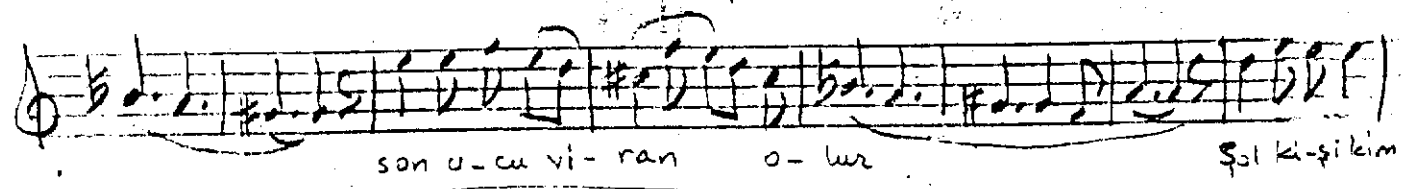
Sen ma- li- na tap- ma- gel



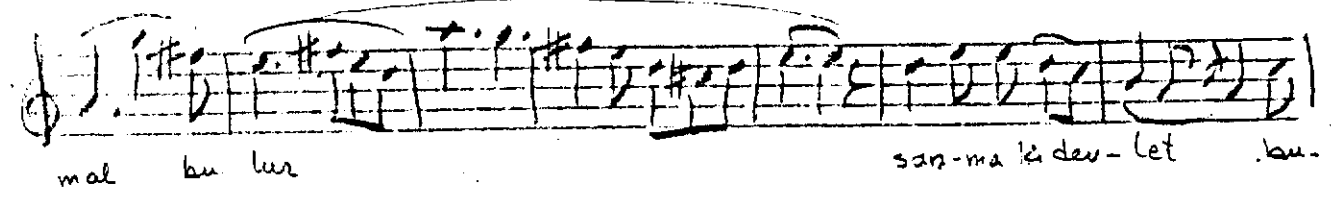
Kök ve yap- ma- gel



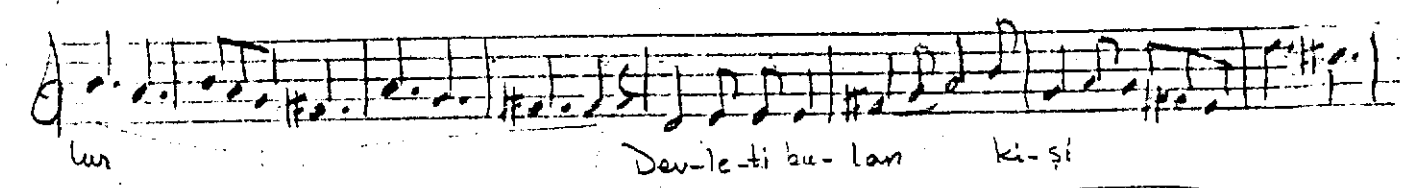
ol ça-lı-şup yap- dı ğin



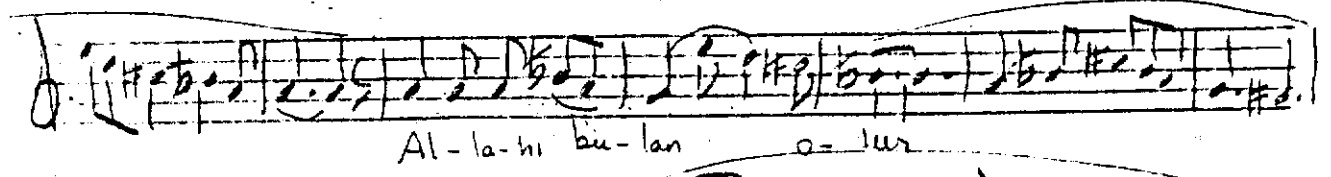
son u-cu vi- ran o- lur şal ki-şilem



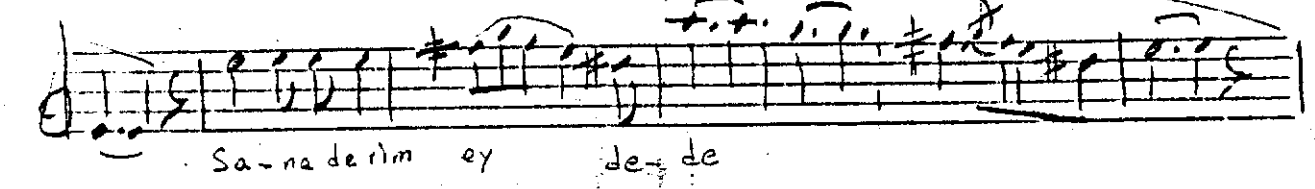
mal bu lur san- ma ki dev- let bu-



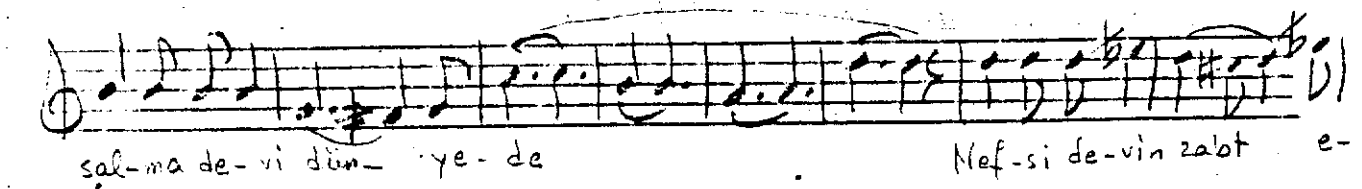
lur Dev- le- ti bu- lan ki- şı



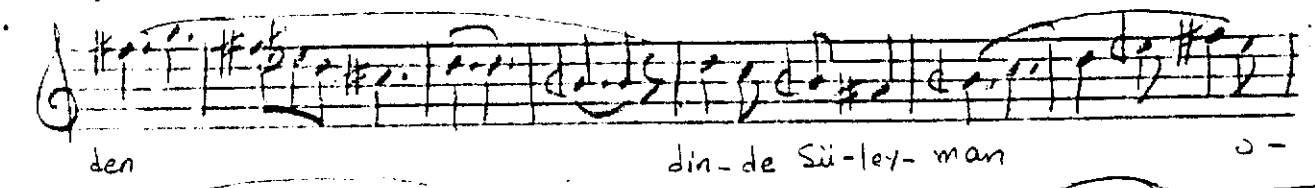
Al- la- hı bu- lan o- lur



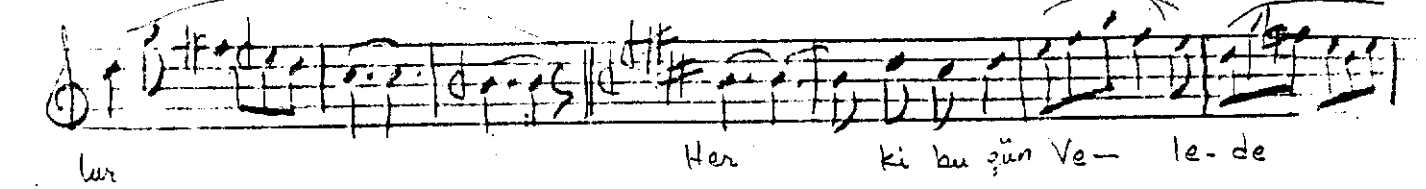
Sa- na derim ey de- de



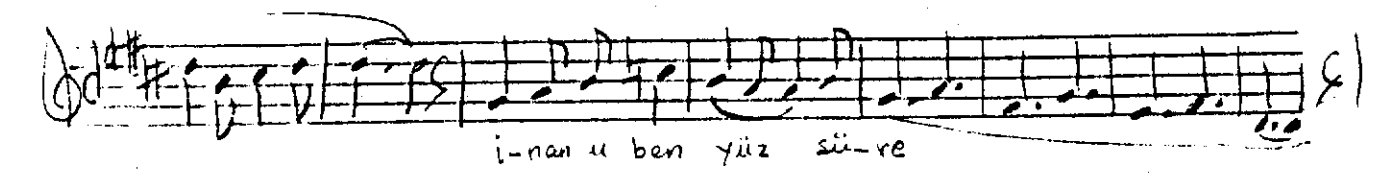
sal- ma de- vi dün- ye- de Nef- si de- vin zaht e-



den din- de Sü- ley- man o-



lur Her ki bu ğün Ve- le- de



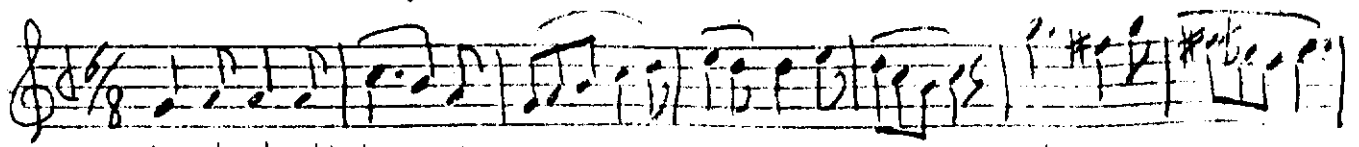
i- nan u ben yüz sü- re



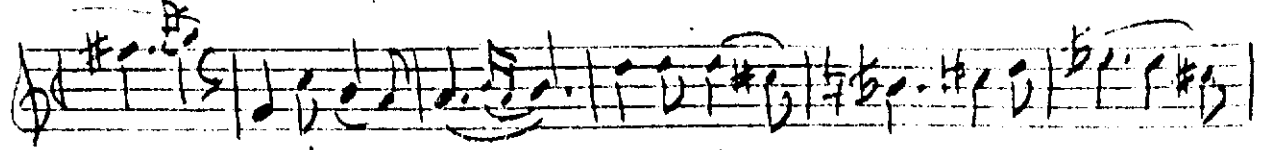
bay o lur bay i se sul- lan

3. Yürük Semâ (♩-120)

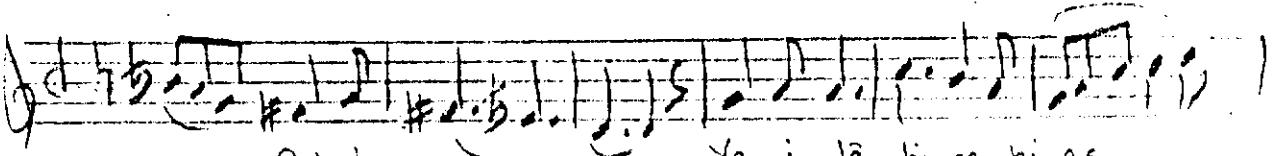
- 6 -



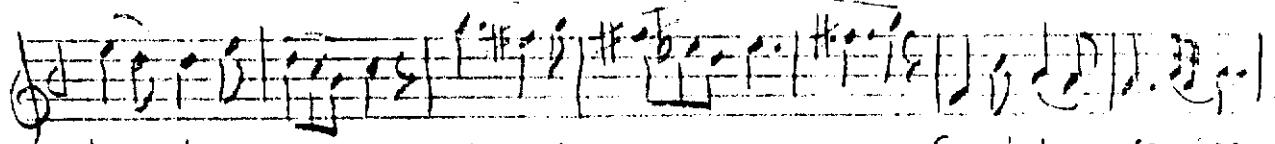
An-de-li-bi ba-ğı hic-ran ol-mu-şum ya Rab-be-na



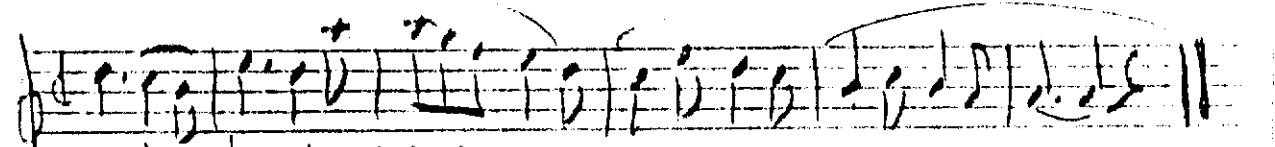
Gül-i-za ra mes-tü hay ran ol-mu-şum



ya Rab-be-na Ya i-lâ-hi ra-hi aş-

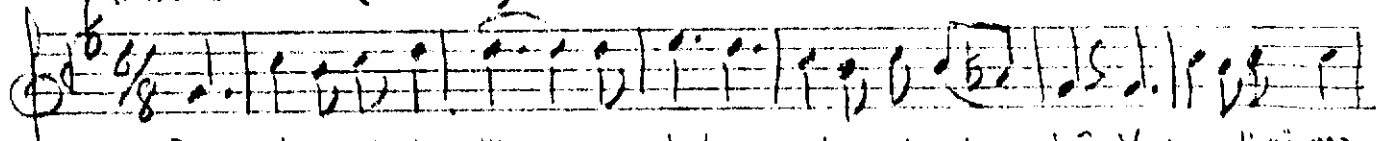


kın-dan a-yık-ma ab-di-ni Can i-le ca-na-

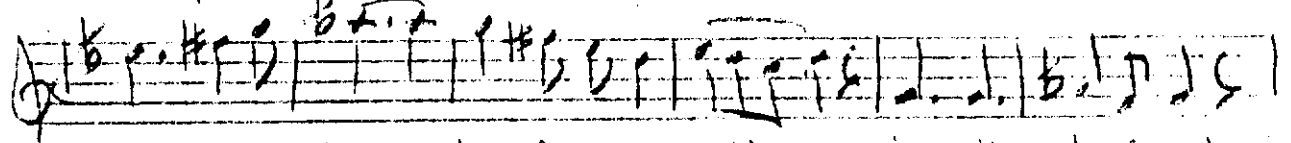


na kur-ban ol-mu-şum ya-Rab-be-na

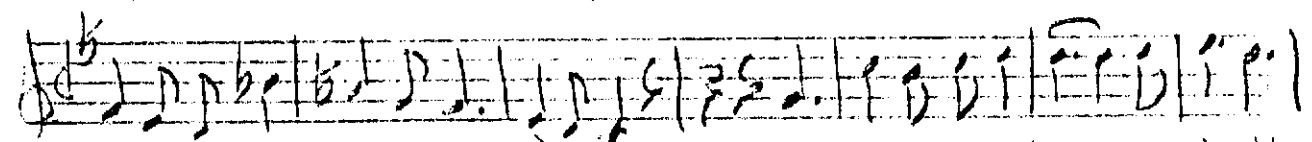
3.



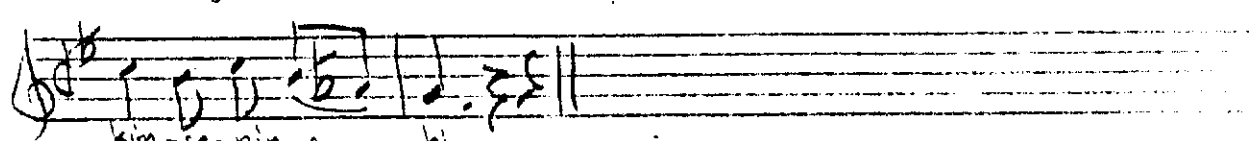
Ey ad-li i-lâ-hi me-ded ey ad-li i-le-hî Vey za-limî maz



lu-mun o-lan hav-fü pe-na-hi İn-din-de se-nin

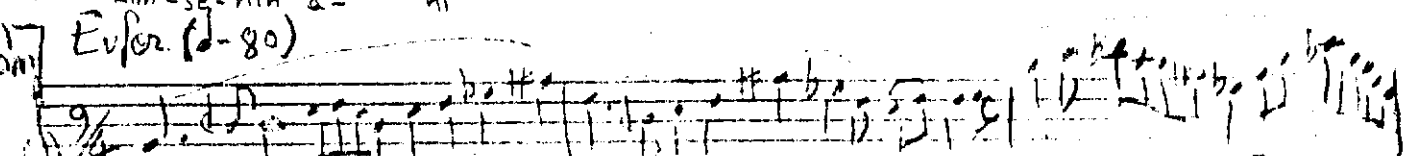


şa-hü ge-da cüm-le si bir-ken Kal-maz e-be-de kim-se-de bir

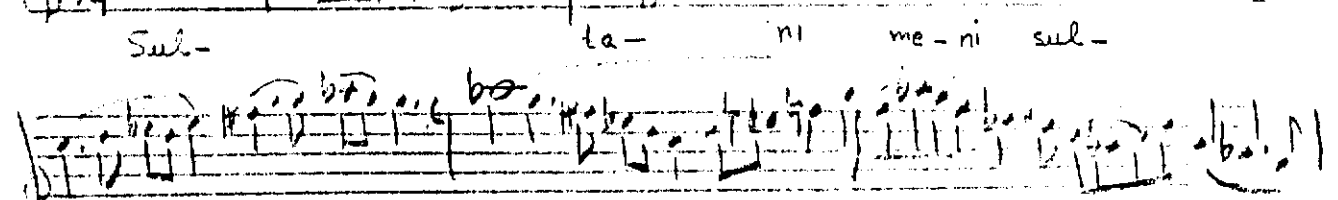


kim-se-nin a-hi

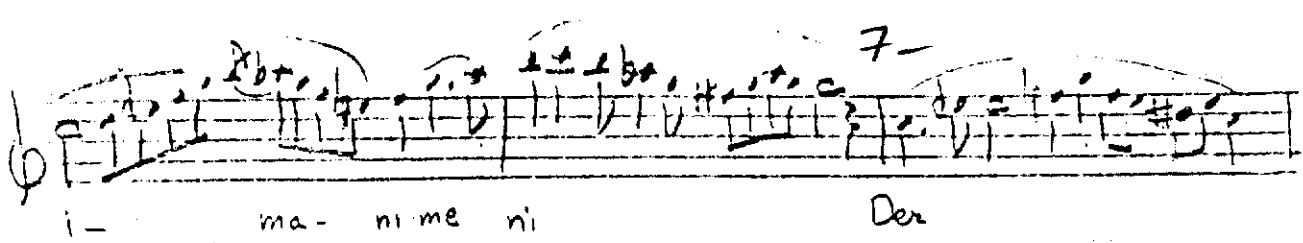
4. Selâm Evfer (♩-80)



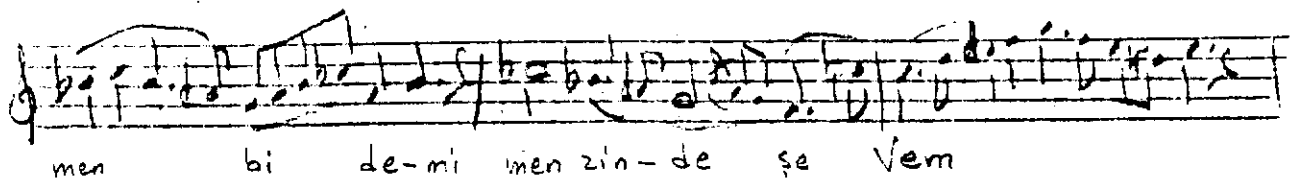
Sul-ta-ni me-ni sul-



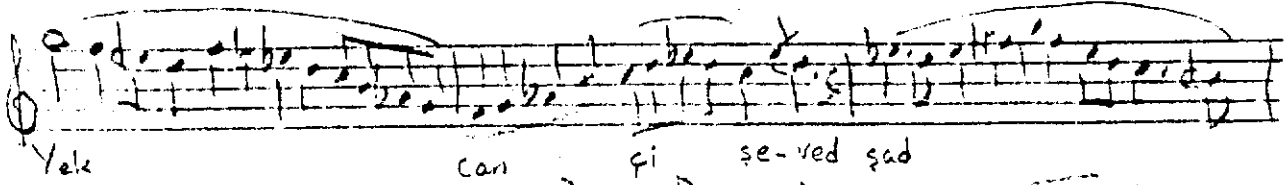
ta-ni me-ni Ven der-di-lü can



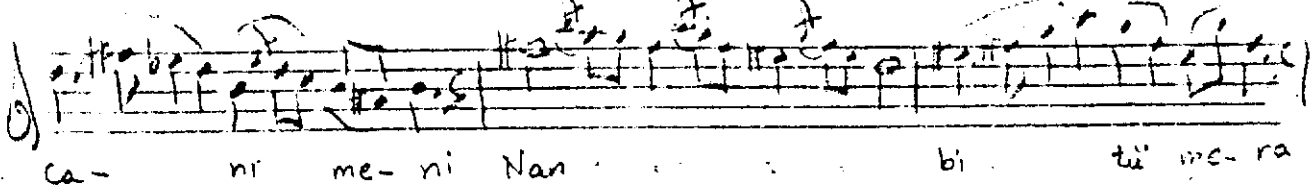
i - ma - ni me ni Der



men bi de-ni men zin-de se Vem



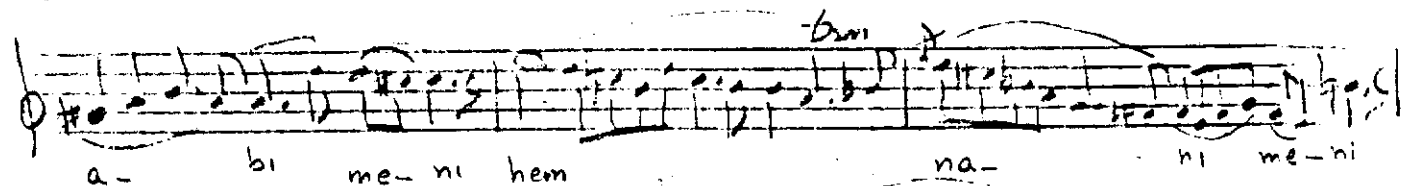
Yek can fi se-ved şad



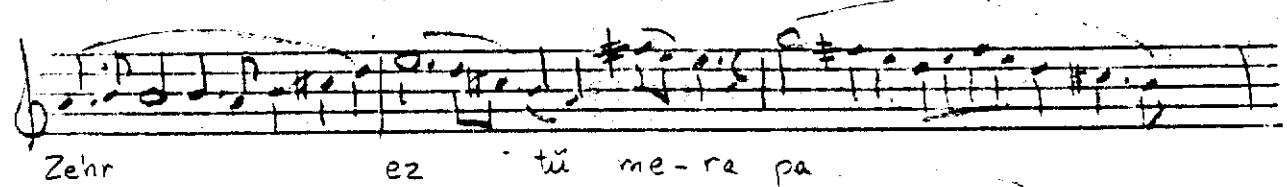
Ca- ni me- ni Nan bi tû me- ra



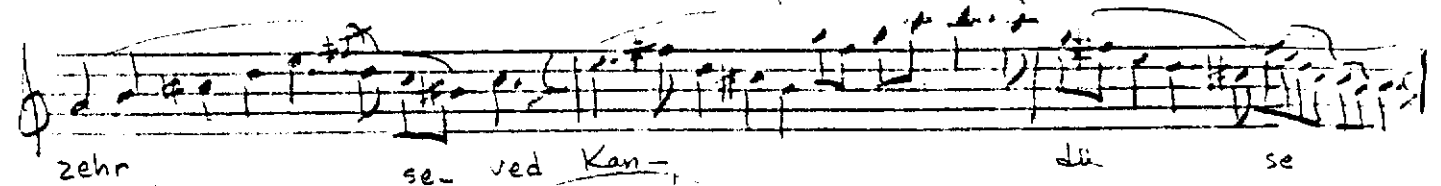
zeh rest ne nan hem



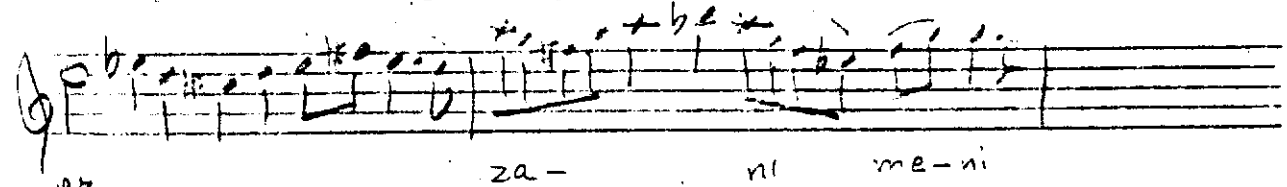
a- bi me- ni hem na- ni me- ni



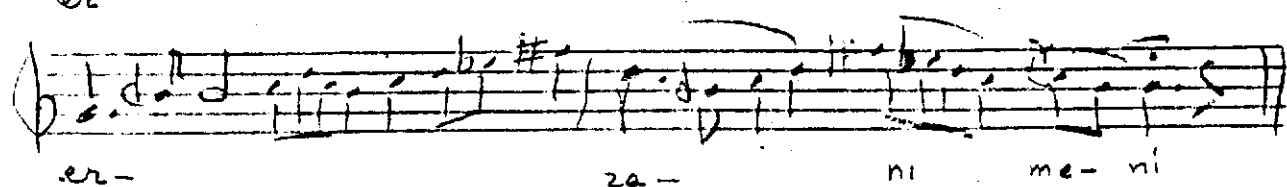
Zehr ez tû me- ra pa



zeh se- ved Kan- di se



er za- ni me- ni



er- za- ni me- ni